

# C9800 Series

**OKI**<sup>®</sup>  
PRINTING SOLUTIONS

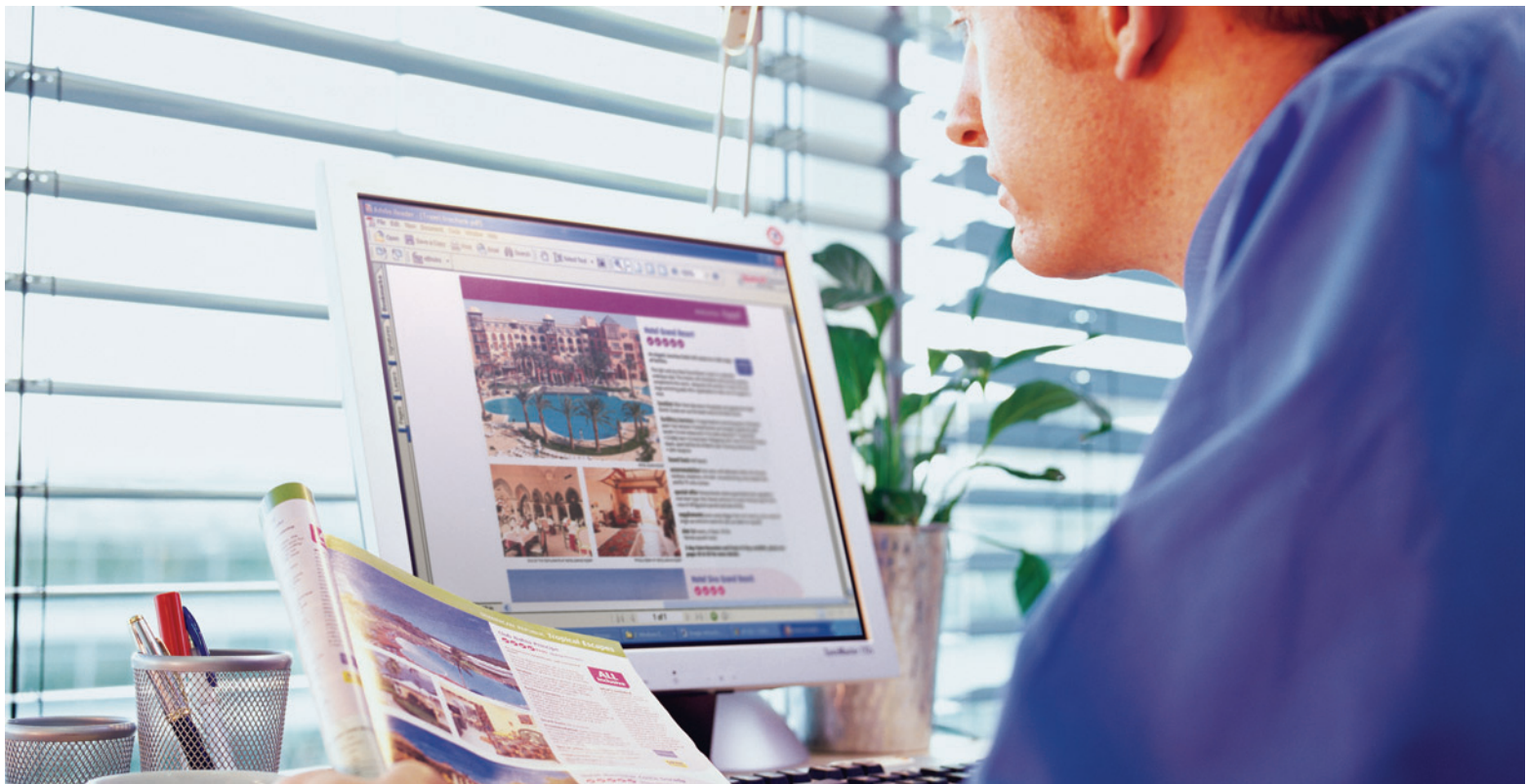


Exceptional color when accuracy counts.

C9800hn  
C9800hdn



**C9000**  
Series



## Your work demands fast, accurate color—with the emphasis on accurate. The C9800 Series gives you precisely that!

### Highlights:

- Color-accurate output at up to 36 ppm, monochrome (black & white) at up to 40 ppm<sup>1</sup>
- Single Pass Color™ Digital technology for printing on media up to 270 gsm
- Full suite of EFI color-matching and job management utilities standard
- High-capacity, 2-piece consumables (toner and drum) for low Total Cost of Ownership
- Tabloid-extra/A3 (12" x 18"); prints banner sheets up to 12.9" wide by 47.24" long
- ProQ4800 Multi-level technology for sharper detail and rich color depth; up to 1200 x 1200 dpi resolution
- Powerful 1 GHz TM5800-1000 processor
- Generous 1 GB of standard RAM
- 20 GB Hard Disk Drive standard
- Holds up to 2,880 sheets with options
- Job Accounting software and Web-based printer management utility standard
- Direct PDF Printing – print .pdf files without Adobe® Acrobat® or Acrobat Reader
- Available with duplex<sup>2</sup>, additional paper trays, and finisher/stapler
- 1-Year On-Site limited warranty on printer<sup>3</sup>; 5-Year limited warranty on LED printheads
- Live, toll-free technical support 24/7/365<sup>3</sup>

### High-volume color printing with EFI Fiery® technology— for color-centric applications.

#### Digital color-matching printers from OKI Printing Solutions provide in-house, tabloid-extra color output.

Color is the most effective way to add impact to your printed documents. But to stand out from the competition, your color output must be vibrant and accurate.

The C9800 Series not only produces beautiful, color-accurate documents, but does it fast, reliably and affordably. Whether for presentations, brochures, advertising layouts or promotional material, the C9800 Series is the perfect solution for your busy workgroup.

#### Commercial printshop performance with consistency and accuracy.

The C9800 Series controller is powered by EFI Fiery technology. It provides print control and job management functionality to optimize document workflow and ensure consistently exceptional results. With the EFI Fiery controller, you can manage or preview print jobs in the queue, balance the workflow of networked devices, manage color profiles, and save templates on the printers' hard disk drive for faster processing and printing of jobs.

Multi-level printing enables the C9800 Series to deliver fine details and stunning color depth, while OKI Printing Solutions' proprietary toner

formulation lends a professional-looking light gloss finish to your printed documents.

#### Media flexibility and cost-efficiency, too.

The C9800 Series is the ideal solution for producing a wide range of documents on a variety of paper weights and sizes. Single Pass Color™ technology and the straight-through paper path of the C9800 Series allow for faster color and mono print speeds, minimal paper jams, and smooth handling. Productivity features like Auto Media Detect automatically adjust the printer to your required media type, and Auto Color Balance ensures that output remains consistent from start to finish.

All C9800 Series printers are equipped with Job Accounting software that allows tracking of color and mono pages, the types and quantities of paper used, and a record of printing activity by user or department.

Further, the cost of a black & white page is as low as many mono laser printers, so you can use the C9800 Series printers for all of your business printing.

**The C9800 Series.** High-quality, consistent color from OKI Printing Solutions—the ideal business printer for your demanding, color-centric workgroup environment.

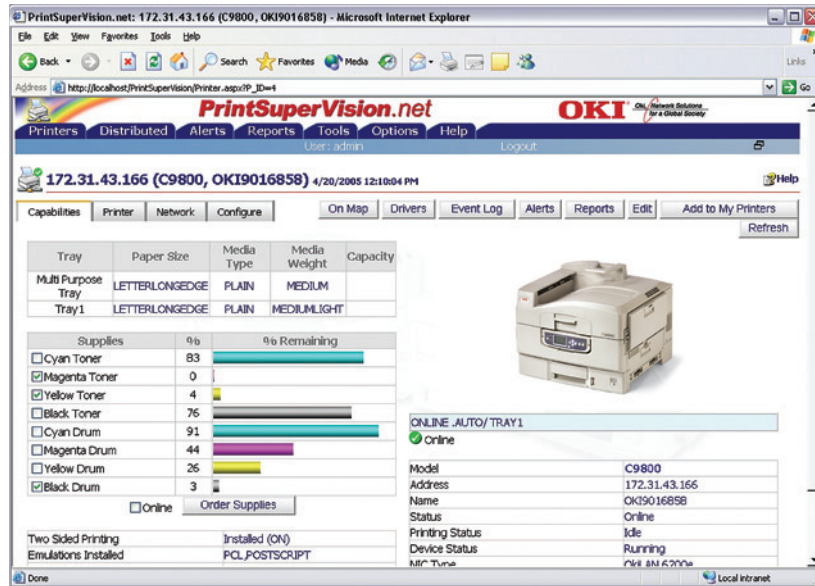
<sup>1</sup> Published performance results based on laboratory testing. Individual results may vary.

<sup>2</sup> Standard on C9800hdn model.

<sup>3</sup> Available in the U.S. and Canada only.

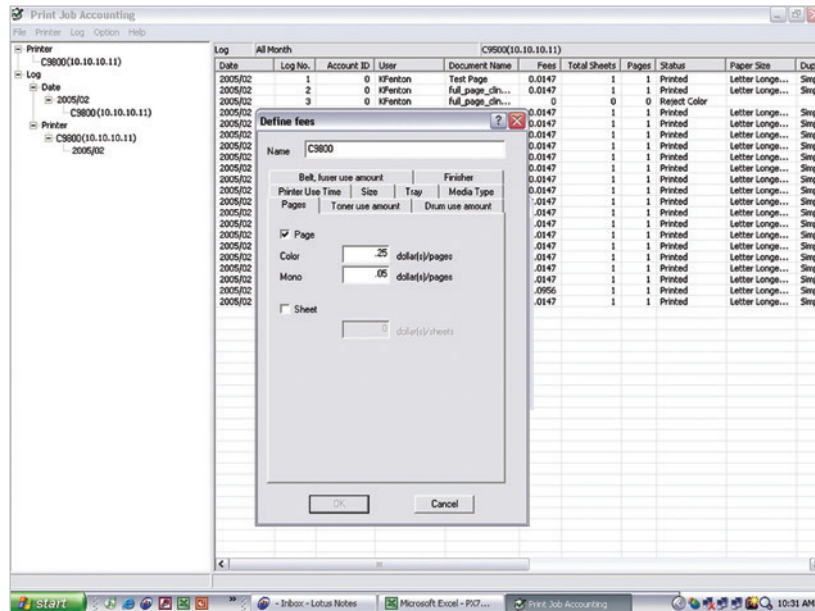
# OKI Printing Solutions: High performance comes standard.

**Productivity- and profit-enhancing software utilities:**  
monitor your printer's status and manage its use.



## PrintSuperVision

Robust, scalable, Internet-based software components that enable administrators to access and distribute printer data and control the functionality of all the OKI Printing Solutions printers and most other SNMP-based printers on their network.



## Job Accounting Software

Enables tracking of color printing costs and easy monitoring and control of printer usage—with both Server and Client components.

**Unmatched media flexibility:**  
print letterhead, table tents, even  
4-foot banners – up to 270 gsm!

Introducing the Signage Media Collection from OKI Printing Solutions. The C9800 Series prints them all—beautifully!



**Clear Film Cling Labels**  
8.5" x 11" – Easy to  
apply and remove!



**Premium Gloss Paper**  
Enhances printed  
color visuals



**Premium Card Stock**  
3 different weights;  
uniformly smooth surface



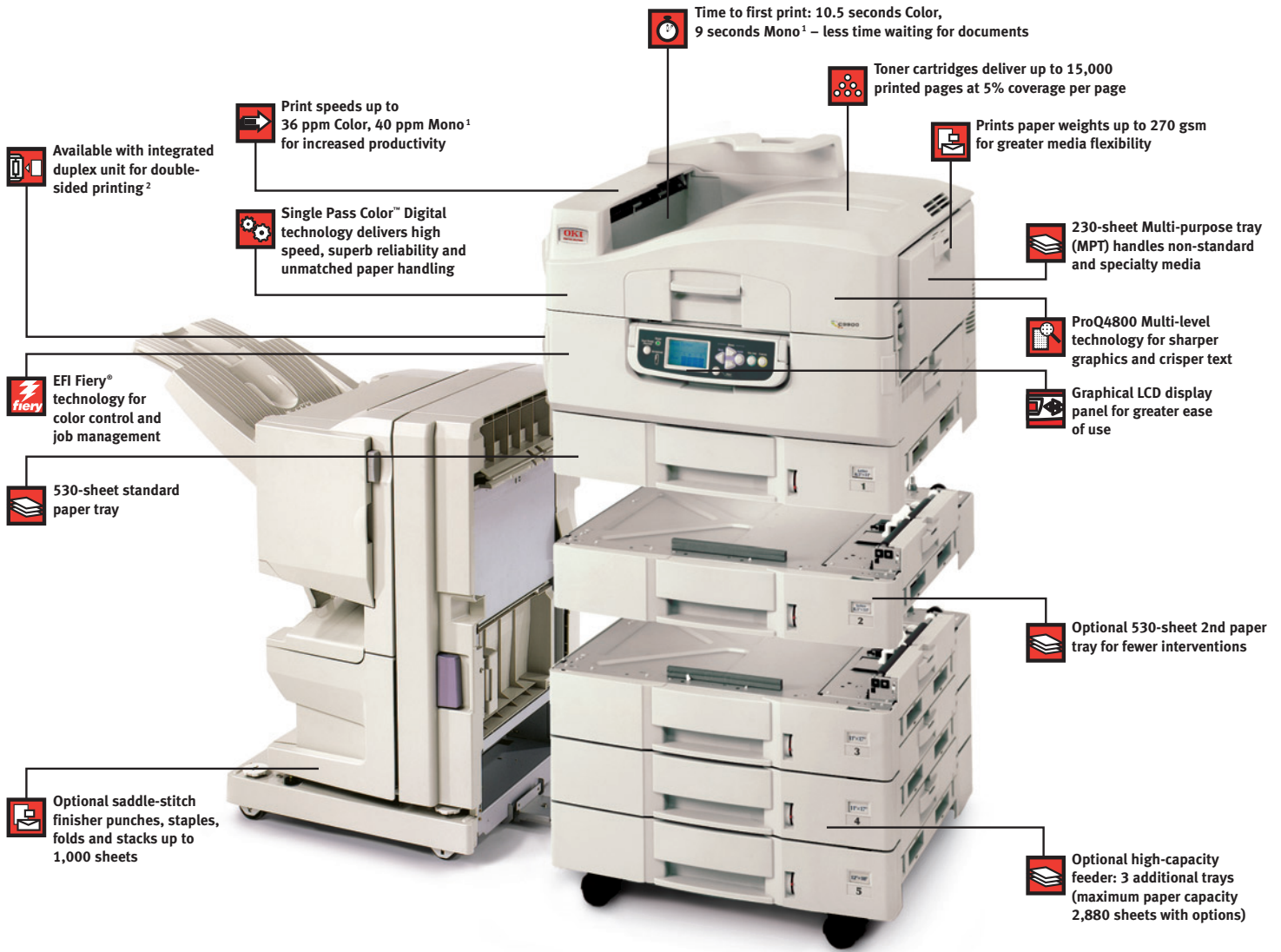
**Table Tents**  
Easy to assemble;  
ideal for table displays



**Banner Paper**  
35.4" x 12.9" – ideal for  
retail signage

For more information or to  
order from the Signage Media  
Collection: 1.800.OKI.DATA  
(800.654.3282).

# C9800 Series At-a-Glance



The easy-to-read, easily accessible operator panel of the C9800 Series: it tilts up for user convenience, and features a bright text-and-graphics LCD display.



C9800 Series Operator Panel in “flat” or “down” position.

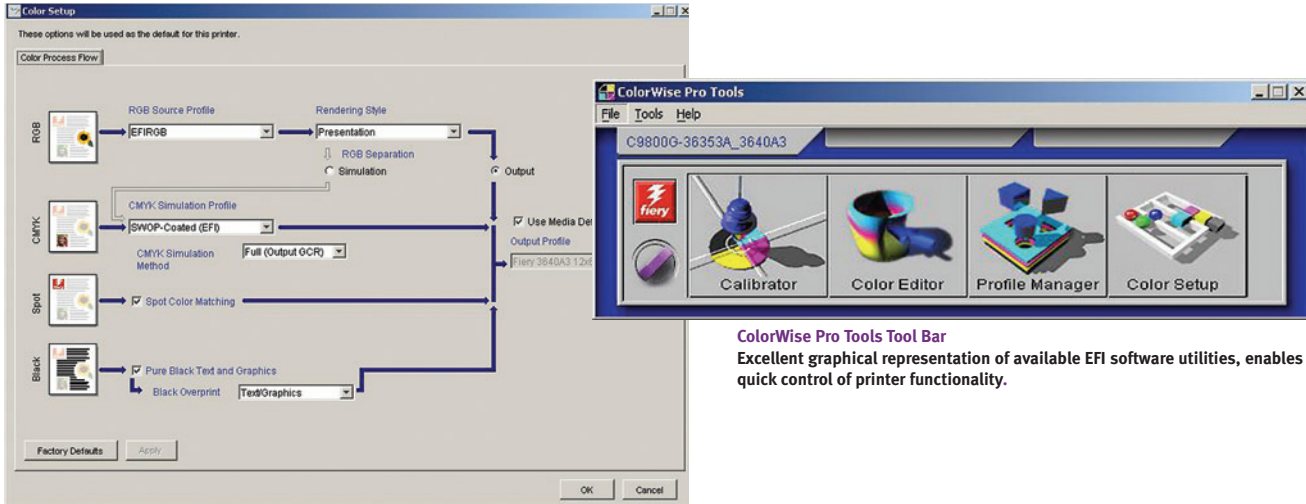


C9800 Series Operator Panel can be tilted upwards to various angles (up to 90°) for greater convenience.

<sup>1</sup> Published performance results based on laboratory testing. Individual results may vary.  
<sup>2</sup> Standard on C9800hdn model.

# Color matching and job management utilities from EFI, the world leader in color controller technology.

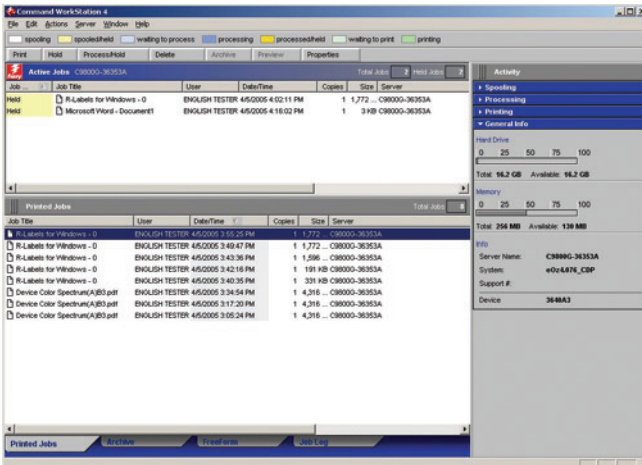
Both models in the C9800 Series come with EFI Fiery® technology and EFI color matching/job management utilities—which makes them the perfect solution for advertising agencies, design firms, marketing communications departments, even commercial printers.



**ColorWise Pro Tools Tool Bar**  
Excellent graphical representation of available EFI software utilities, enables quick control of printer functionality.

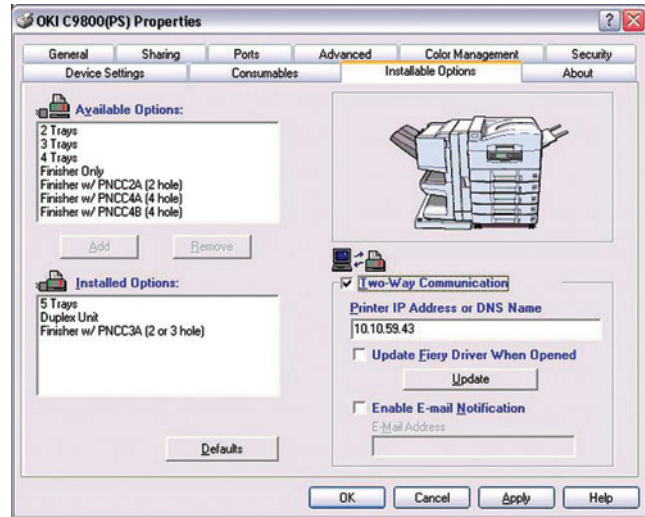
## EFI ColorWise™ Pro Tools

Easy-to-use color management software suite for producing consistently precise colors from all applications, platforms and file formats. Allows administrator to access and effect color management by the Fiery; manipulates each print job according to global (previously established) standards and job-specific settings.



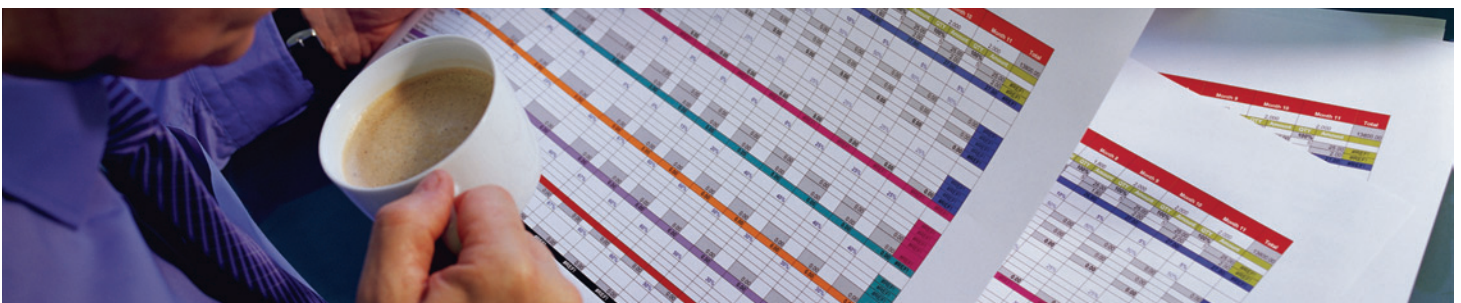
## EFI Command WorkStation™ 4

Automatically identifies and displays information about Fiery printers on the network; enables operators and administrators to track and manage jobs, and oversee job flow through the Fiery.



## EFI Fiery Driver

Intuitive and easy to use—access information on your C9800 Series printer.



# C9800 Series

## Specifications

### Performance

- **Print Speed:** Up to 36 ppm Color, 40 ppm Mono<sup>1</sup>
- **Time to First Page:** 10.5 sec. Color; 9 sec. Mono<sup>1</sup>
- **Warm-Up Time:** 110 sec. or less from Power On
- **Resolution:** ProQ4800 Multi-level technology; up to 1200 x 1200 dpi resolution
- **Processor:** 1 GHz TM5800-1000
- **Reliability/Duty Cycle:** 150,000 pages / month

### Standard Productivity Features

- **EFI Utilities:** ColorWise™ Pro Tools; Command WorkStation™ 4; DocBuilder™; Freeform™; Downloader™
- **Job Accounting:** Track precise count of color and mono pages printed by individual or department
- **Print Supervision:** Web-based software printer management tool
- **Storage Device Manager:** Stores and manages forms, letterheads, logos and fonts
- **Auto Media Detect:** Automatic paper weight detection
- **Auto Paper Tray Select:** Automatically detects paper size

### Color Controls

- **Color Management:** EFI ColorWise Pro Tools; download to printer and manage new ICC Input/Output profiles
- **Ink Simulations:** SWOP®, Euroscale and others
- **Color Matching Modes:** sRGB, Monitor Simulations
- **Spot Color Matching:** PANTONE® Color Matching System

### Compatibility

- **Emulations:** PCL® 5c, PCL 6, Adobe PostScript 3™; Direct PDF Printing (Windows environment only)
- **Operating Systems:** Windows® XP Professional, XP Home, 2003 server; Windows 98, 98 SE, ME, NT® 4.0 Workstation, NT 4.0 Server (SP6 or later), 2000 Workstation (SP3 or later), 2000 Professional (SP3 or later), 2000 Server (SP3 or later), 2000 Advanced Server (SP3 or later); Citrix® MetaFrame® – Windows 2000 Server (ServicePack4) with Citrix MetaFrame XP® Presentation Server Feature Release 3, Windows Server 2003 Standard Edition with Citrix Meta-Frame XP Presentation Server Feature Release 3; Mac® OS 9.2, Mac OS 10.2.4 thru 10.3.8
- **Network & Protocols:** 10/100 Base TX Ethernet card with internal Web server for printer and network card set-up and management; includes POP3 and SMTP Mail client for submission of print jobs and for alerts. All major network protocols supported – TCP/IP, Netware and EtherTalk. TCP/IP includes ARP, IP, ICMP, TCP, UDP, LPR, FTP, HTTP(IPP), BOOTP, DHCP, SNMP, DNS, JetDirect protocols; Netware includes 3.x, 4.x, 5.x and 6 with full NDS and NDPS support – PServer, NDPS supported via dedicated OKI NDPS Gateway. EtherTalk: ELAP, AARP, DDP, AEP, NBP, ZIP, RTMP, ATP, PAP.

### Memory

- **Standard/Max RAM:** 1,024 MB (1 GB)
- **Flash Memory:** 4 MB standard
- **Hard Disk Drive:** 20 GB standard

### Interface

- **Standard Connectivity:** 10/100-TX Ethernet High-speed USB v2.0, Parallel

### Paper Handling

- **Standard Input:** 760 sheets (530-sheet universal tray + 230-sheet multi-purpose tray)
- **Optional Input:** 2nd/3rd universal tray (530 sheets each); High-Capacity Feeder (1,590 sheets)
- **Maximum Capacity:** 2,880 sheets (Printer + 2nd tray + High Capacity Feeder + Multi-Purpose Tray)
- **Paper Sizes Supported:** Tabloid extra (12" x 18"), tabloid, legal, letter, executive, index cards, A3, A4, A5, A6, B5, C5, DL, Com 10, Monarch envelopes, and banners (up to 12.9" by 47.24")
- **Paper Weight:** Trays 1 thru 5 support 17 lb.–57.5 lb. bond (64-216 gsm); Multi-purpose tray supports 17 lb.–72 lb. bond (64-270 gsm); duplex supports 20 lb.-32 lb. bond (75-120 gsm)
- **Duplex (2-sided printing):** Standard on C9800hdn; optional on C9800hn

### Typefaces

- **Printer Fonts:** 86 scalable PCL fonts, 1 bitmap font, 10 TrueType® fonts, 136 Adobe PostScript Type 1 fonts, OCR A/B, USPS Barcode

### Environmental

- **Size (WxDxH):** 25.8" x 24.4" x 18.2" (65.5 cm x 62.0 cm x 46.2 cm)
- **Weight:** 152 lb. (69.0 kg)
- **Power Consumption:** Typical 750W, Peak 1500W, Idle 200W (average), Power Save <45W
- **Acoustic Noise:** Operating: 54dB(A) or less, Standby: 40dB(A) or less, Power save: 40dB(A) after 30 minutes (background level)
- **Energy Star:** Yes

### Warranty

- **Printer:** 1-Year limited On-Site warranty<sup>2</sup>, parts and labor
- **Digital LED Printhead:** 5-Year limited warranty

**Important Consumables Information:** This product has been designed and engineered to operate only with genuine OKI Printing Solution consumables. Use of non-genuine consumables will result in the loss of certain printer enhancements, such as Auto Color Balance and the Toner Sensor gauge.

**For more information** on Digital Color printers and supplies from OKI Printing Solutions, including OKIcare® Extended Service Programs: **1.800.OKI.DATA** (800.654.3282).<sup>2</sup>

<sup>1</sup> Published performance results based on laboratory testing. Individual results may vary.

<sup>2</sup> Available in the U.S. and Canada only.

<sup>3</sup> Estimated life at 5% coverage on letter-size paper (printers ship with 7,500-page standard toner cartridge).

<sup>4</sup> Estimated life, continuous printing (will vary depending on number of printed pages per job).

## Ordering Information

Description	Part Numbers
C9800hn, 120v (Multilingual)	62423009
C9800hn, 230v (Multilingual)	62423010
C9800hdn, 120v (Multilingual)	62423007
C9800hdn, 230v (Multilingual)	62423008
<b>Options</b>	
2nd and 3rd 530-sheet Paper Tray Mechanism	42831301
Duplex Unit	42797201
High-Capacity Feeder	42831501
4-Tray Finisher	70050701
5-Tray Finisher	70050801
2- /3-Hole Punch for Finisher	42872902
<b>Supplies</b>	
<b>High-Capacity Toner Cartridges (Type C7)</b>	
Cyan Toner Cartridge	15,000 pg. <sup>3</sup> 42918903
Magenta Toner Cartridge	15,000 pg. <sup>3</sup> 42918902
Yellow Toner Cartridge	15,000 pg. <sup>3</sup> 42918901
Black Toner Cartridge	15,000 pg. <sup>3</sup> 42918904
<b>Image Drums (Type C7)</b>	
Cyan Image Drum	42,000 pg. <sup>4</sup> 42918103
Magenta Image Drum	42,000 pg. <sup>4</sup> 42918102
Yellow Image Drum	42,000 pg. <sup>4</sup> 42918101
Black Image Drum	42,000 pg. <sup>4</sup> 42918104
<b>Consumables</b>	
Fuser Kit (120V)	100,000 pg. <sup>4</sup> 42931701
Fuser Kit (230V)	100,000 pg. <sup>4</sup> 42931702
Transfer Belt	100,000 pg. <sup>4</sup> 42931601
Waste Toner Box	30,000 pg. <sup>3</sup> 42869401
Finisher Staples	15,000 count 42937601
<b>Print Media</b>	
	Sheets Per Box
10-Pt. Gloss Paper (8.5" x 11")	250 52208401
10-Pt. Gloss Paper (11" x 17")	250 52208402
Premium Card Stock (8.5" x 11"):	
60 lb. cover	250 52205601
90 lb. index	250 52205602
110 lb. index	250 52205603
Bright White Proofing Sheets (32 lb.):	
8.5" x 11"	500 52206101
11" x 17"	500 52206102
12" x 18"	500 52206103
Premium Color Transparency Film	50 52205701
Table Tents (3 @ 4" x 18")	250 52207201
4-Up White Labels (@ 4.125" x 7")	250 52207301
Banner Paper (12.9" x 35.4")	100 52206001
SynFlex™ Paper (8.5" x 11" – Waterproof and Tear-resistant)	100 52205901
Premium Envelopes (size #10):	
100	52206301
500	52206302

Specifications are subject to change without notice.

© 2005 Okidata Americas, Inc. OKI Reg. T.M., M.D. M.R., OKIcare, OKILAN Reg. T.M., Okidata Electric Industry Co., Ltd. Single Pass Color T.M. and design Reg. T.M., Okidata Corp. Command Performance, SynFlex T.M., Okidata Americas, Inc. Fiery Reg. T.M., Command WorkStation, EFI DocBuilder, Freeform, EFI Downloader, Electronics for Imaging, Inc. SWOP T.M., SWOP, Inc. PostScript Reg. T.M., PostScript 3 T.M., Adobe Systems Inc. Microsoft, Windows, Windows NT Reg. T.M., Microsoft Corp. PCL, Reg. T.M., Hewlett-Packard Co. Mac Reg. T.M., Apple Computer Inc. Energy Star Reg. T.M., U.S. EPA. Solaris, Reg. T.M., Sun Microsystems, Inc. Citrix, MetaFrame, MetaFrame XP Reg. T.M., Citrix Systems, Inc. USB-Logo T.M. Universal Serial Bus Implementers Forum, Inc.



## OKI DATA AMERICAS, INC.

USA  
2000 BISHOPS GATE BLVD.  
MOUNT LAUREL, NJ 08054-4620  
TEL: 800.OKI.DATA (800.654.3282)  
FAX: 856.222.5320

CANADA  
2735 MATHESON BLVD. EAST  
MISSISSAUGA, ONTARIO L4W 4M8  
TEL: 905.238.4250  
FAX: 905.238.4421

LATIN AMERICA AND MEXICO  
2000 BISHOPS GATE BLVD.  
MOUNT LAUREL, NJ 08054-4620  
TEL: 856.231.0002  
FAX: 856.222.5071

[WWW.OKIPRINTINGSOLUTIONS.COM/US](http://WWW.OKIPRINTINGSOLUTIONS.COM/US)